

Thank you for joining! We will begin shortly.

In the meantime, some important notes:

- **EDA Eligibility:** EDA's programs are designed to support local intermediaries doing economic development work. Individual citizens and for-profit entities are not eligible to receive EDA funding.
- EDA will post slides, FAQs, and resources to the website afterwards
- Please enter questions into the Q&A box, not the chat box



Visit www.eda.gov/arpa to learn more about
EDA's American Rescue Plan programs.



Economic Adjustment Assistance (EAA)

Economic Development Administration

American Rescue Plan funding

INVESTING IN AMERICA'S COMMUNITIES

Webinar Notes

- EDA will post slides, FAQs, and resources to the website afterwards
- Please enter questions into the Q&A box, not the chat box



Visit www.eda.gov/arpa to learn more about EDA's American Rescue Plan programs.

\$3 billion in American Rescue Plan funding allows EDA to lead an unprecedented approach to: *“prevent, prepare for, and respond to coronavirus and for necessary expenses for responding to economic injury as a result of coronavirus.”*

EDA’s American Rescue Plan programs are designed to:

- 1. Accelerate the economic recovery from the coronavirus pandemic**
- 2. Build local economies that will be resilient to future economic shocks**



\$3 billion in American Rescue Plan funding to invest in:

Jobs for Today



Good Jobs Challenge
Travel, Tourism & Outdoor Recreation

Communities Built for All



Economic Adjustment Assistance
Indigenous Communities
Coal Communities Commitment

Regions for the Future



Build Back Better Regional Challenge

Statewide Planning, Research & Networks



Eligible Entities for EDA Funding

- District Organizations of EDA-designated Economic Development Districts
- Indian Tribes, which include Federally-recognized Indian Tribes and any Alaska Native Village or Regional Corporation (as defined in or established under the Alaska Native Claims Settlement Act (43 U.S.C. 1601 et seq.)
- State and Local governments or political subdivisions, including special purpose units of State or local government engaged in economic or infrastructure development activities (e.g. regional water and sewer districts, airport commissions, and regional economic development commissions)
- Institutions of higher education
- Public or private nonprofit organizations or associations working in cooperation with officials of a general purpose political subdivision of a State (e.g., a city, town, or county)

EDA does not provide funding to for-profit entities or individuals.



American Rescue Plan EAA Goals & Conditions

Supporting Coal Communities

EDA will fund \$200M of its *Coal Communities Commitment* through the EAA NOFO.

Nexus

- Any project that will create jobs or contribute to a community's or region's economic recovery is eligible
- Tribes can apply; tourism projects restricted to respective program

Flexibility

EDA has broad discretion on use of EAA funds; funding is authorized to prevent, prepare for, and respond to coronavirus and for necessary expenses for responding to economic injury as a result of coronavirus

Award Timeline

- Funds expire on September 30, 2027 and no funds can be disbursed after that date
- The period of performance for all projects **must** end by May 31, 2027 to allow for close out

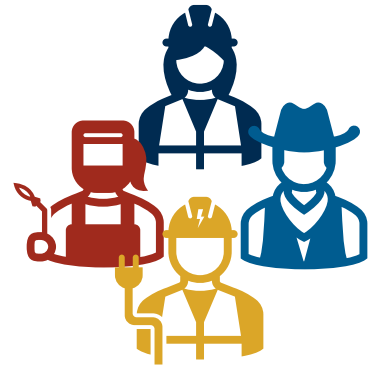


Economic Adjustment Assistance

\$500 million

Invest in infrastructure, technical assistance, planning, and revolving loan programs through competitive grants available to every community

- A wide range of technical, planning, workforce development, entrepreneurship, and public works and infrastructure projects are eligible for funding under this program.
- EDA encourages application submissions based on long-term, regionally oriented, coordinated, and collaborative economic development or redevelopment strategies that foster economic growth and resilience. This includes plans aimed at building stronger regional economic links between urban centers and rural areas.



Award Timeline



July 2021

Applications accepted

Rolling competitive grant applications and awards



Sept 30, 2022

All funds must be obligated



May 31, 2027

Period of performance must end to allow for close out



What's familiar in EDA's American Rescue Plan EAA program

- Stakeholders should address EDA's new investment priorities in applications
- The normal processes for environmental and historic preservation review apply and should be completed prior to award
- Applicants will work with EDRs as the primary ARPA EAA program contacts
- The presumptive grant rate is 80%, with EDA discretion to go to 100%
 - ★ **Note:** Applications that provide more match are also more competitive



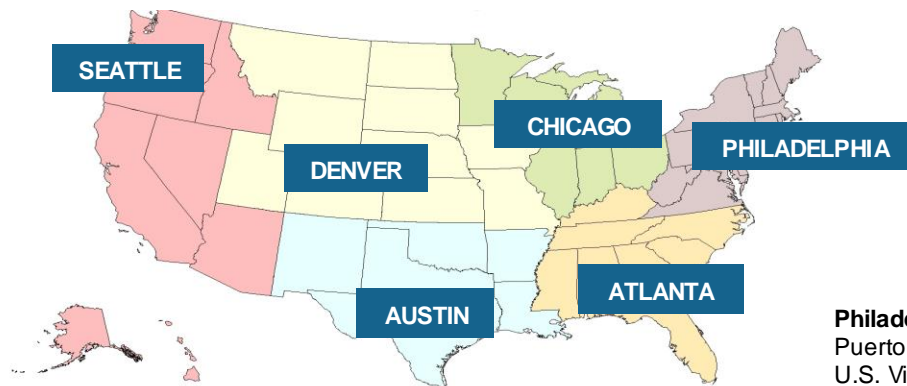
What's different in American Rescue Plan EAA

- **EAA will aim to address larger projects.** EDA anticipates projects will cost between \$500,000 and \$5 million.
- In **section B.2 of the ED-900**, applicants should “explain whether and if so how the project will incorporate strong labor standards, including project labor agreements and community benefit agreements, that offer wages at or above the prevailing rate and include local hire provisions, and a description of the applicant’s workforce plans and practices.”
- All applications must explain in **section B.8 on the ED-900** what steps the applicant will take to ensure that the economic benefits of the project will be shared by all communities in the project region, including any underserved communities.
 - ★ **Note:** The quality of this plan is an evaluation factor. Applications are not complete without that discussion.



Next Steps to Apply

1. Read the **Notice of Funding Opportunity (NOFO)** and Eligibility Requirements: <https://eda.gov/funding-opportunities/>
2. Find your **Economic Development District** for planning support and technical assistance: <https://eda.gov/resources/directory/>
3. Connect with your state's **Economic Development Representative** with questions: <https://eda.gov/contact>



Seattle:
American Samoa
Guam
Federated States of
Micronesia
Palau
Marshall Islands
Commonwealth of the
Northern Mariana
Islands

Philadelphia:
Puerto Rico
U.S. Virgin
Islands



Questions

1. How much does EDA anticipate the EAA grants to be?
2. What is the match requirement for EAA grants? Does EDA recognize in-kind match?
3. Can my organization submit multiple projects under the American Rescue Plan programs?
4. How does EDA recognize eligible coal communities?
5. How do I know whether to apply for an EAA grant or coordinate with a Build Back Better Regional Challenge coalition?



Visit www.eda.gov/arpa to learn more about the American Rescue Plan programs

More Questions?



Visit www.eda.gov/arpa to learn more about the American Rescue Plan programs and find contact information for each.